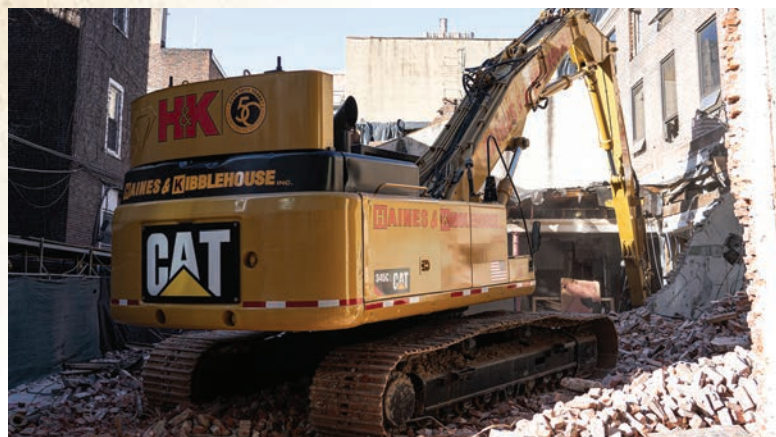


PROJECT PROFILE



2052 Lucon Road
P.O. Box 196 Skippack, PA 19474

Phone: 610.584.8500
Email: info@hkgroup.com
Web: hkgroup.com



© Copyright 2023 H&K Group, Inc. All rights reserved. Proudly designed and printed in the USA. Information subject to change without notice.

Project

Jewelers' Row Demolition
Future Residential Development

Location

Center City Philadelphia
7th & Sansom Streets

H&K Company

Haines & Kibblehouse, Inc., Philadelphia, PA

Client

Toll Brothers

Project Info

One of the more high-profile projects in Philadelphia in recent years, the Jewelers' Row project involved demolition of five early 20th Century buildings, sandwiched between two buildings slated to remain. Given prior use of these five structures, heightened public outcry ensued for several years prior to actual demolition, and the project drew significant media coverage prior to the involvement of Haines & Kibblehouse, Inc. (H&K, Inc.).

Following City of Philadelphia rules and regulations, H&K, Inc. installed scaffolding to protect an adjacent alleyway, then safely demolished two, four-story buildings completely and the top two floors of the remaining three buildings by hand. The remainder of the buildings were then mechanically demolished utilizing a 65' high-reach excavator. All material was loaded out by hand and equipment into trailers and/or roll-off containers.

Aside from the hands-on man hours, the most challenging part for H&K, Inc. was logistics and scheduling. Following the need of the property owner, H&K, Inc. worked 50 to 65-hour weeks for 2 months to maintain the schedule needed. With project location in Center City Philadelphia, the logistics of vehicle traffic, pedestrian traffic, and limited working area made communication and coordination paramount to completing the project safely and effectively.

Project Highlights:

- 11,025 MH
- 95 Working Days
- Daily 14 - 20 Crew Size